

Pate Hollow Trail



USDA Forest Service

Hoosier National Forest

8/2011

Description

Approximate Length: 7.7 miles

Type: Hiking.

Special Features: This trail provides a hike through mixed hardwoods with views of Lake Monroe. An old road serves as an inner connector for those desiring a shorter hike.

Etiquette and Rules

Motorized vehicles, mountain bikes, and horses are not permitted on this trail.

Pack out your trash.

Backcountry camping is permitted **ONLY** on Hoosier National Forest land (see below for an explanation of different jurisdictions).

Safety

Use caution during hunting seasons. Blaze orange clothing is recommended during deer season (do not wear white).

Ticks and chiggers are common. Take necessary precautions including avoiding tall grass and thick brushy areas.

Loose limbs and hazard trees can fall on the trail at anytime, especially on windy days.

Emergencies

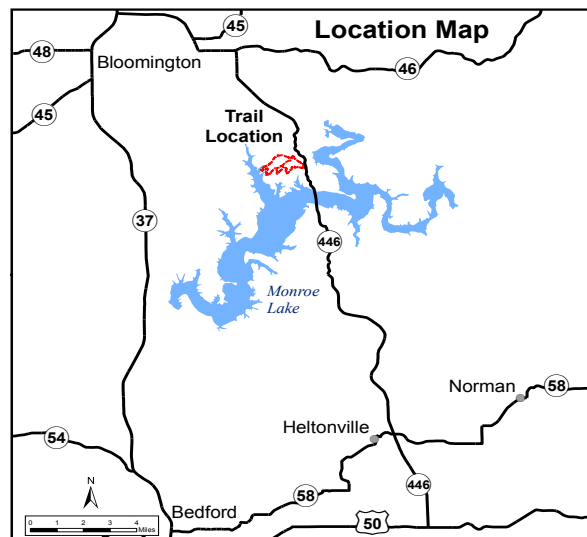
- Nearest public phone is located in front of the Paynetown State Recreation Area Office, just east of the parking lot on State Road 446.

- Emergencies may also be reported in person to the Indiana Conservation Officers Headquarters on the east side of the parking lot, or at the entry station to the Paynetown SRA just west of the parking lot. Note: Those facilities may not always be staffed.

Facilities

The trailhead parking lot and the first few feet of the trail is located at the Paynetown State Recreation Area managed by the Indiana Department of Natural Resource (DNR). That facility offers camping, swimming, a boat ramp and marina, a nature center, and additional hiking trails.

There are no public restrooms available.



A Partnership at Work

This trail is a joint effort between the Hoosier NF and the Indiana DNR. The parking lot trailhead is administered by the DNR and offers access not only to the Hoosier's Pate Hollow Trail, but also to the DNR's White Tail Trail. The White Tail Trail intersects just a few feet into the trail and takes off to your left. Have fun on both trails but please be aware that different rules apply for each agency.

Directions

From Bloomington, IN, take State Road 446 south approximately 9.8 miles. From Bedford, take US 50 east to State Road 446. Follow State Road 446 to the north approximately 24 miles to the trailhead.

The trailhead is located directly behind the Paynetown State Recreation Office, just west of the Indiana Conservation Officer Headquarters.

GPS Coordinates for the Pate Hollow Trailhead:
39°5'32.504"N, 86°25'27.721"W

For More Information

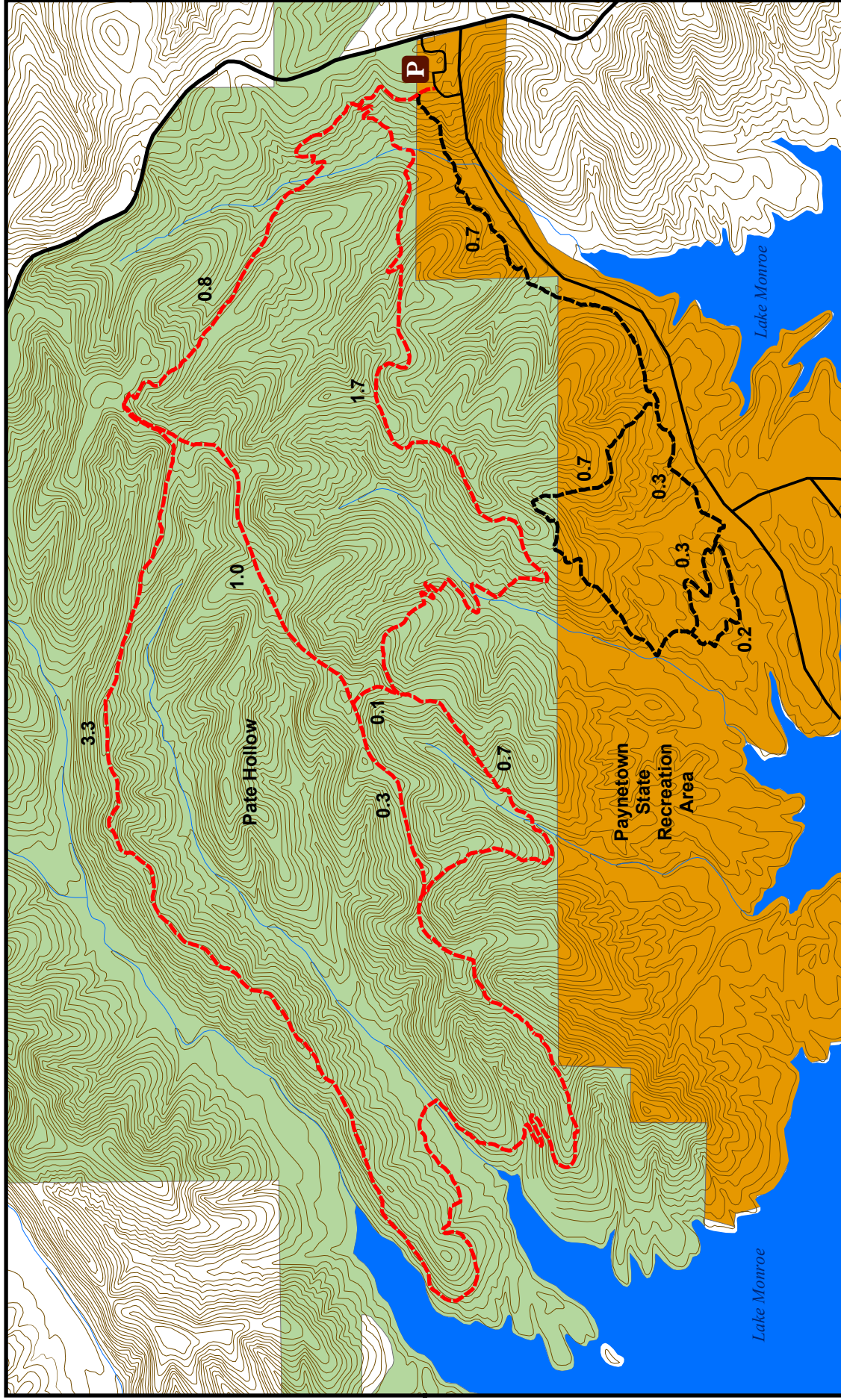
Hoosier National Forest
811 Constitution Avenue
Bedford, IN 47421
(812) 275-5987

Toll Free: 1-866-302-4173
www.fs.usda.gov/hoosier

Federal Relay Number for the deaf and hearing impaired is: 1-800-877-8339

USDA is an equal opportunity employer and provider

Pate Hollow Trail



Look for these symbols to be sure you are on an official trail:

- Colored Post with decals
- ◇ Dot or Diamond

Trails may be color coded to indicate use type:

- Blue - Hiking, Mountain Biking, and Horse Riding
- Yellow - Hiking and Mountain Biking Only
- White - Hiking Only



Large Print Copies Available

Legend

- HNF Pate Hollow Trail
- IDNR Whitetail Trail
- Road
- Stream
- 10' Contour Line
- Water
- Forest Service
- IDNR
- 1.2 Mileage Between Intersections
- Parking